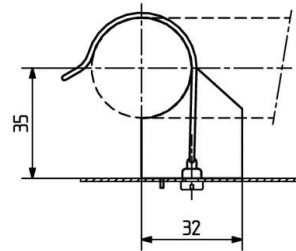
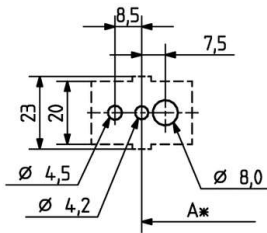


 Create pdf

## Lampholders and starter holders

26.712.4834

G10q Lampholders for circular lamps



colour	pkg.	wt.	part no.
white	250	11 g	26.712.4834.50

Support for lamps G10q

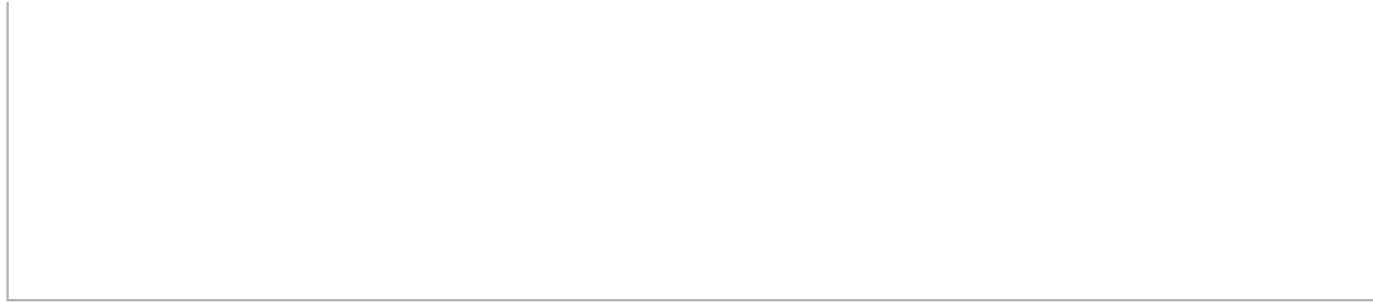
Lamp centre: 35 mm  
Screw fixing

Housing: PC

- Thread: M4
- Support provides a lamp diameter tolerance compensation of 12 mm
- Suitable only with lampholder 26.712.4710.50

A\*: Recommended dimensions - the final distance should be governed by the dimensions of the respective lamps and luminaires.

A: 22 W - 152 mm  
A: 32 W - 241 mm  
A: 40 W - 343 mm



Document generated on: We, 8. February 2017 - 14:21